

Bedienungsanleitung 2 | User manual (GB) 14 | Manuel d'utilisation (FR) 24 | Manual de instrucciones 34 | Istruzioni per l'uso 44 | Bedieningshandleiding 54 | Manual de instruções 64 |
Betjeningsvejledning 74 | Инструкция по применению 84

ZWILLING® FRESH & SAVE VACUUM STARTER SET

Safety

Please carefully read this user manual in its entirety before using the vacuum pump. Keep this manual in a safe place. If you give the vacuum pump away, be sure to include this manual with it. A failure to

comply with this user manual can lead to serious injury or damage to the appliance. Zwilling does not accept any liability for damage caused by a failure to comply with this user manual.

Safety information

The vacuum pump (hereinafter referred to as the "appliance") is intended to be exclusively used with all ZWILLING FRESH & SAVE vacuum storage options to create an effective vacuum seal for long-lasting food storage. It may only be used with the accessories supplied or approved by Zwilling. Any other use is considered improper and may result in personal injury or property damage. The appliance is

intended for domestic use. It is not intended for commercial use. Do not use the appliance on yourself, other persons or animals. Certain persons are at greater risk:

This appliance can be used by children aged from 8 years and above and persons with reduced physical or sensory capabilities or lack of experience and knowledge if they have been given supervision or

instruction concerning use of the appliance in a safe way and understand the hazards involved. Children shall not play with the appliance. Cleaning and user maintenance shall not be made by children without supervision.

Keep the appliance and its connecting cable in a location that is not accessible to children under 8 years old. Keep children away from the packaging material. It poses a risk of suffocation. The device has a permanently installed battery. Improper handling causes the risk of fire. Only charge the battery using the included charging cable. Do not disassemble the battery. Do not short-circuit the appliance and do

not throw it into fire. Do not open or otherwise destroy the appliance.

The appliance is charged with electric current. There is therefore a danger of electric shock. Only charge the appliance if the voltage stated on the rating plate of the used adapter matches the voltage of your socket. Make sure that the charging cable is not kinked or pinched and make sure that the charging cable and the appliance do not come in contact with sources of heat (e.g. hobs, gas flames). Always directly unplug the power adapter from the socket (do not pull the charging cable).

Do not carry the appliance by the charging cable.

Disconnect the charging cable from the appliance immediately after the charging process is complete. After every charging and in the event of danger or a defect, unplug the power adapter connected to the charging cable from the socket immediately. Unplug the appliance from the charging cable prior to cleaning or maintenance. As long as the power adapter is plugged in, there is a voltage inside the appliance, even if the appliance is switched off. Never unscrew the appliance and do not make any technical modifications.

Check the appliance for damage prior to each use. If you detect any transport damage, contact the dealer from whom you purchased the appliance immediately. Never use a faulty appliance or faulty accessories. Never operate an appliance or accessories that have been dropped. In the event of a fault, please contact our customer service. The appliance does not contain any parts that you are able to repair yourself. Damage may occur if the appliance is handled incorrectly.

Explanation of symbols



Danger of harm to persons or property due to electric current



Risk of property damage and damage to the appliance







Hints for effective use

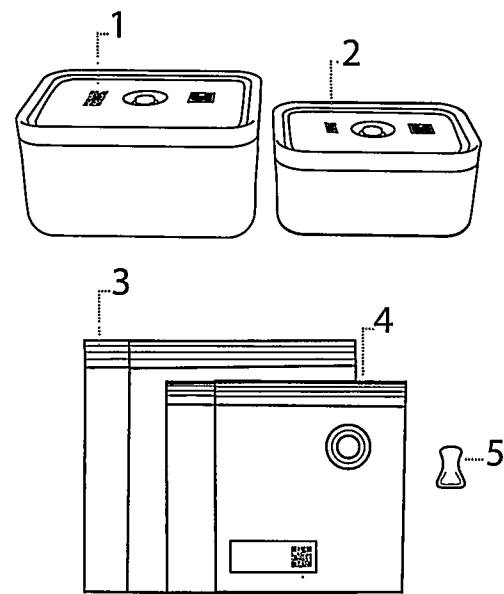
Technical data

Battery Specification	3,7 V, Li-Ion 1200 mA
Power adapter (not included)	Input: 100 - 240 V~, 50/60 Hz Output: 5 V~, 1000 mA
Charging cable	USB 2.0 type A, micro USB, length 0.8 m
Dimensions (L x W x H)	50 x 50 x 190 mm
Weight	approx. 0.3 kg
Material	ABS plastic, silicone

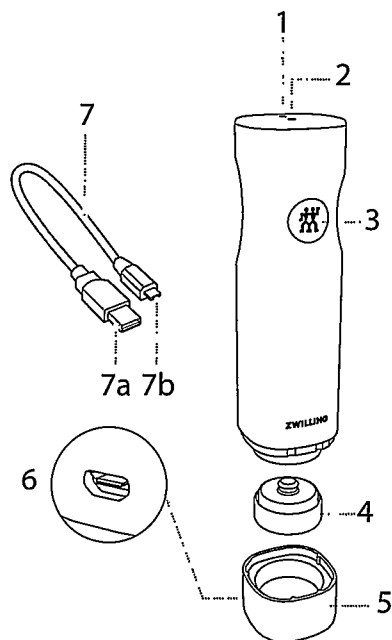
Key to symbols on the appliance

	Appliance class III - Low voltage
	CE certification mark
	Do not throw away with household waste
	EAC certification mark

Overview



1	Vacuum box L	2	Vacuum box M
3	2x Vacuum bag M	4	2x Vacuum bag S
5	Zipper		



Use



Vacuum sealing is not a substitute for proper freezing, cooling or conserving of food. Maintain the usual food storage and hygiene procedures. Do not vacuum pack food that is above room temperature. Blanch, cool and dry raw cabbages before vacuum sealing to avoid gases from building inside the vacuum pack. Vacuum-packed meat might become darker due to the lack of oxygen in the vacuum pack but will return to its original color once it's unpacked.

Reading the indicator light and battery symbol

- Indicator light flashing: Vacuum sealing in process
- Indicator light lights up for 5 seconds and then turns off: Vacuum sealing is complete
- Battery symbol flashing fast: Battery power is low
- Battery symbol flashing slow: Charging in process
- Battery symbol glowing: Fully charged, ready to unplug

1	Battery symbol	2	Indicator light
3	On/Off button	4	Silicon valve
5	Charging station	6	USB connection port
7	Charging cable with USB 2.0 (a) and micro USB (b)		

1 Charging the vacuum pump



To maintain optimal battery function, charge at least once every 3 to 6 months.

Charge the vacuum pump fully before the first use. Place the pump in the charging station. Insert the small USB connector into the port at the charging station. Insert the larger USB connector (USB 2.0) into a power adapter and plug it into a wall socket.

You can also connect the charging cable to the USB port of a computer. During charging, the indicator light will flash slowly. When the pump is fully charged, the indicator light will continuously glow. Charging can take 2 to 5 hours.

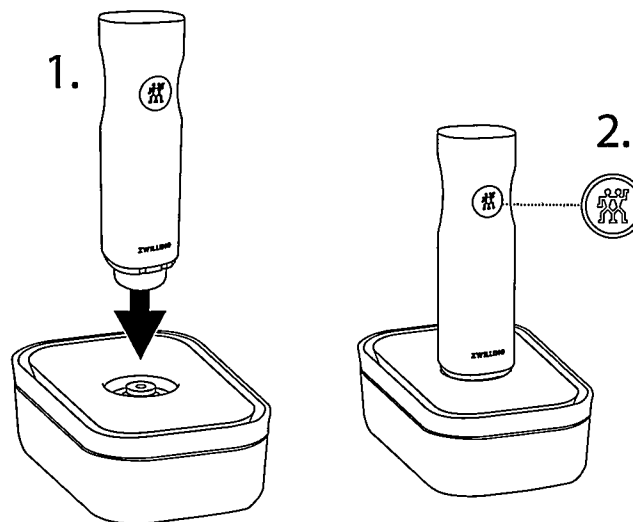
2 Vacuum sealing a container



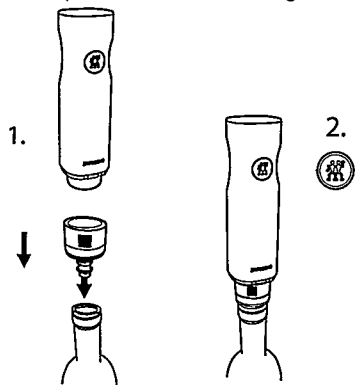
The duration of the vacuum sealing process depends on the size of the container and how much it is filled. If a container is smaller or more full, the vacuum sealing process is faster.

Place the vacuum pump on the valve of the box and press down lightly. Press the On/Off button on the pump. The pump sucks the air out of the box. The vacuum sealing of the box expands.

The vacuum sealing stops automatically when the vacuum pressure reaches the right level. The vacuum sealing can also be manually stopped at any time by pressing the On/Off button.

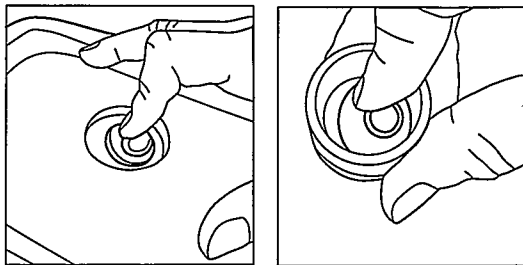


Bottles can be sealed using the wine sealer. The pump stops automatically when the vacuum pressure reaches the right level.

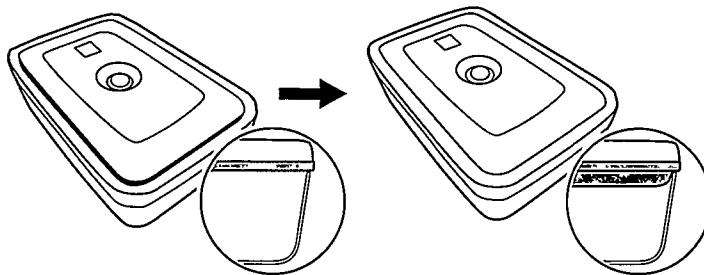


3 Opening vacuum sealed containers

Gently pull back the valve on the container. The air will slowly release. When it stops, you can open the container.

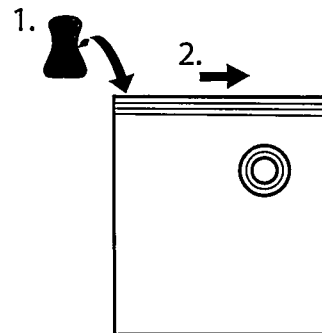


After the vacuuming process, the inner lid of the vacuum box will be lowered and the sealing is expanded.



To quickly close the vacuum boxes without using the vacuum pump, gently press down the inner lid.

Bags can be easily closed with the included zipper. Slide it sideways onto the bag and move it across to close the bag.





Make sure the rim of the box is clean and dry.

Do not overfill the box. Make sure the food inside the box does not come in contact with the valve on the inside of the lid.



Zwilling FRESH & SAVE glass vacuum boxes can be placed in the oven if the lid is removed. Do not expose the glass vacuum boxes to extreme temperature fluctuations, e.g. placing a vacuum box out of the fridge into the warm oven.



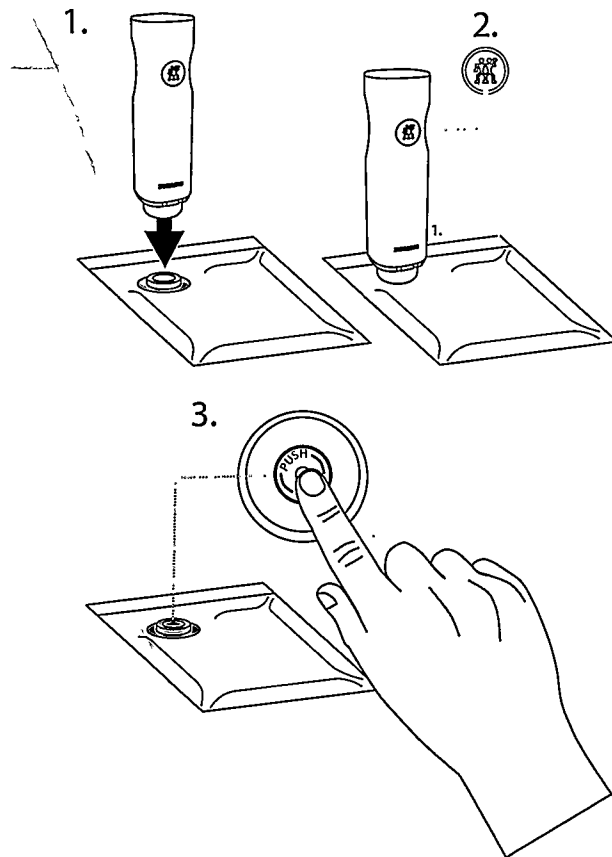
The opening of the bag has to be completely clean and dry. Make sure the valve on the inside of the bag does not come in contact with its contents. The pump must not absorb any liquids (e.g. water, oil, meat juices). If you see that the pump is sucking up liquids, immediately stop the vacuum sealing process by pressing the On/Off button. See also chapter **Troubleshooting**.



The bags included in the starter pack can be used to warm up food in the microwave, as long as the food in the bag is not oily.



We recommend freezing liquid or soft foods prior to vacuuming.



Cleaning



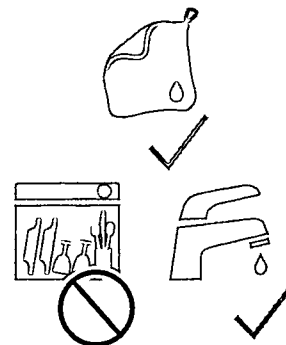
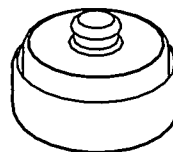
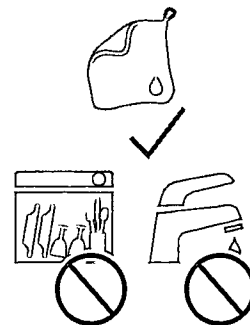
Unplug the power adapter and disconnect the vacuum pump from the charging cable prior to cleaning.

1 Cleaning the vacuum pump

Only use a dry or slightly damp cloth to clean the body of the vacuum pump and the charging station. Do not put any parts of the pump into the dishwasher.

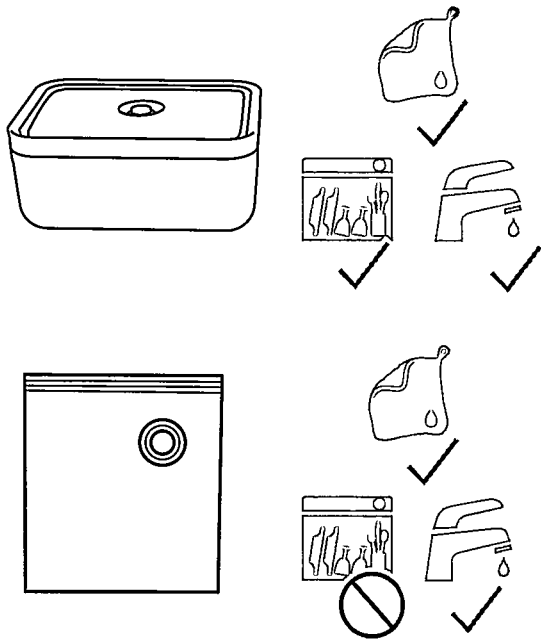
2 Cleaning the silicone seal

To clean the silicone seal, remove it from the body of the vacuum pump by gently pulling downwards and clean it with water.



3 Cleaning the boxes and bags

The boxes can be cleaned in the dishwasher. Bags are reusable if they contained fruit, bread, vegetables or any other dry goods. Do not reuse bags containing raw meats, fish, eggs or unpasteurized cheese.



Troubleshooting

Problem	Possible cause	Remedy
The pump stops during the vacuum sealing process and does not turn back on.	The pump sucked in liquids during the vacuum sealing process.	Do not turn the pump upside down. Shake the pump slightly to remove any liquid. Make sure the pump and the charging station are completely dry. Plug the pump into the charging station for one second to reset, then remove it and push the On/Off button. Additional liquids may drip out. Repeat this process if the pump stops again.
The pump does not respond to the On/Off button.	The battery of the pump is low or not charged.	Charge the pump's battery.

The pump does not create a vacuum when placed on a container or the vacuum does not last.	The lid of the vacuum container, the silicone seal or the valve are positioned incorrectly.	Check that the positioning is correct and that the lid is properly closed.
	The silicone seal or the container valve are dirty or wet.	Clean and dry the silicone seal and the valve of the container.
	The pump sits too loosely on the valve.	During vacuum sealing, lightly press the pump into the dock surrounding the valve to create a tight seal between the pump and the valve.
The above problems cannot be solved.	The vacuum pump could be broken.	Contact customer service. Do not try to repair the pump yourself.

Customer Service

Please contact our customer service should you encounter any problems with your vacuum pump. Detailed information on service, repairs and warranty can be found at www.zwilling.com/service.

Disposal



Do not dispose of the appliance with household waste. For an eco-friendly disposal, please return your old appliance to a collection point for electrical appliances. Separate collection of individual components of EE equipment prevents negative effects of environmental pollution and minimizes danger to human health, which may occur as a result of improper product disposal. In addition, it enables reuse and recovery of the materials, thus saving energy and raw materials.



ZWILLING

ZWILLING J.A. HENCKELS AG

Gruenewalder Strasse 14-22 · 42657 Salingen
Germany · www.zwilling.com